



# Q2 2025 Quarterly Supplemental Information

---

FrontView REIT, Inc. (NYSE: FVR) is an internally-managed net-lease REIT that acquires, owns and manages primarily properties with frontage that are net leased to a diversified group of tenants.

[investor.frontviewreit.com](http://investor.frontviewreit.com)



# Table of Contents

Section	Page
Company Overview	3
Quarterly Highlights	4
Income Statement	5
GAAP Reconciliation to FFO and AFFO	6
GAAP Reconciliation to Adjusted EBITDAre and Cash NOI	7
Balance Sheet	8
Net Debt Metrics, Fixed Charge Coverage and Covenants	9
Net Asset Value Components	10
Capital Structure and Liquidity	11
Capital Deployment Activity	13
Disposition Activity	14
Diversification: Top 60 Tenant Concepts	16
Diversification: Tenant Industry	17
Diversification: Property Map	18
Diversification: Geography	19
Lease Expirations, Occupancy and Escalations	20
Non-GAAP Definitions and Explanations	21
Other Definitions and Explanations	22 – 23
Forward-Looking and Cautionary Statements	24

# Company Overview

**FrontView REIT, Inc. (NYSE:FVR) (the “Company”, “FrontView”, “FVR”, “us”, “our”, and “we”) is an internally-managed net-lease REIT**

that acquires, owns and manages primarily properties with frontage that are net leased to a diversified group of tenants.

- The Company is differentiated by an investment approach focused on properties that are in prominent locations with direct frontage on high-traffic roads that are highly visible to consumers.
- As of June 30, 2025, the Company owned a well-diversified portfolio of 319 properties with direct frontage across 37 U.S. states.
- The Company's tenants include service-oriented businesses, such as:
  - Medical and dental providers
  - Quick service restaurants
  - Casual dining
  - Financial institutions
  - Cellular stores
  - Automotive stores
  - Convenience store and gas stations
  - Discount retail
  - Automotive dealers
  - Fitness operators
  - Car washes
  - Pharmacies
  - Home improvement stores
  - Professional services

## COMPANY CONTACT INFORMATION

**Pierre Revol**

Chief Financial Officer

[InvestorRelations@frontviewreit.com](mailto:InvestorRelations@frontviewreit.com)



## EXECUTIVE TEAM



**Stephen Preston**  
Chairman of the Board,  
President and Chief Executive Officer



**Pierre Revol**  
Chief Financial Officer



**Drew Ireland**  
Chief Operating Officer



**Sean Fukumura**  
Chief Accounting Officer

## BOARD OF DIRECTORS



**Stephen Preston**  
Chairman of the Board



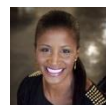
**Robert Green**  
Director



**Elizabeth Frank**  
Independent Director



**Daniel Swanstrom**  
Independent Director



**Noelle LeVeaux**  
Independent Director



**Ernesto Perez**  
Independent Director

# Quarterly Highlights

(unaudited, dollars in thousands, except share, per share data)



Financial results	June 30, 2025	March 31, 2025	December 31, 2024	September 30, 2024	June 30, 2024
Net income (loss)	\$ (4,530)	\$ (1,337)	\$ (21,488)	\$ (3,339)	\$ (3,012)
Net income (loss) per common share, diluted	\$ (0.16)	\$ (0.06)	\$ (0.78)	—	—
Funds from operations (FFO)	\$ 6,720	\$ 6,429	\$ (9,963)	\$ 3,780	\$ 4,010
FFO per share, diluted	\$ 0.24	\$ 0.23	\$ (0.36)	—	—
Adjusted funds from operations (AFFO)	\$ 9,028	\$ 8,229	\$ 9,055	\$ 4,776	\$ 4,892
AFFO per share, diluted	\$ 0.32	\$ 0.30	\$ 0.33	—	—
Dividends declared per share	\$ 0.215	\$ 0.215	\$ 0.215	—	—
Diluted weighted average common shares	27,827,037	27,822,826	27,577,692	—	—

Portfolio at a glance: Key metrics	June 30, 2025	March 31, 2025	December 31, 2024	September 30, 2024	June 30, 2024
Number of properties	319	323	307	278	278
Annualized base rent (ABR)	\$ 62,293	\$ 62,057	\$ 58,843	\$ 52,084	\$ 52,002
Gross real estate investment	\$ 900,305	\$ 929,856	\$ 891,161	\$ 797,323	\$ 797,121
Average rent per square foot	\$ 24.01	\$ 24.24	\$ 24.51	\$ 24.72	\$ 24.68
Rentable square footage	2,594	2,560	2,401	2,107	2,107
Weighted average lease term (WALT)	7.3 years	7.4 years	7.2 years	6.7 years	7.0 years
Number of states	37	37	35	31	31
Occupancy	97.8 %	96.3 %	97.7 %	98.9 %	98.9 %
Number of tenant leases	334	329	320	293	292
Number of tenant concepts	157	150	137	137	137
Number of industries	16	15	15	15	15
Top 10 tenant concentration	22.7 %	22.6 %	21.8 %	23.3 %	23.3 %
Top 20 tenant concentration	38.0 %	37.9 %	37.0 %	38.5 %	38.5 %
Investment grade (tenant/guarantor)	33.1 %	33.2 %	33.1 %	38.0 %	40.4 %

Note: Tenant concentration and reporting coverage are based on ABR as of June 30, 2025.

# Income Statement

(unaudited, in thousands except share and per share data)



	Three Month Ended June 30,		Six Month Ended June 30,	
(unaudited, in thousands except share and per share data)	Successor 2025	Predecessor 2024	Successor 2025	Predecessor 2024
<b>Revenues</b>				
Rental revenues <sup>(1,2)</sup>	\$ 17,467	\$ 14,474	\$ 33,612	\$ 29,627
Other revenues	87	136	185	242
<b>Total revenues</b>	<b>17,554</b>	<b>14,610</b>	<b>33,797</b>	<b>29,869</b>
<b>Operating expenses</b>				
Depreciation and amortization	9,466	6,971	17,271	14,296
Property operating expenses	2,714	1,710	5,090	3,691
Property management fees	—	497	—	1,007
Asset management fees	—	1,034	—	2,068
General and administrative expenses	3,279	643	6,118	1,361
<b>Total operating expenses</b>	<b>15,459</b>	<b>10,855</b>	<b>28,479</b>	<b>22,423</b>
<b>Other expenses (income)</b>				
Interest expense	4,647	6,597	9,144	13,292
(Gain) loss on sale of real estate	(1,194)	51	(1,661)	(337)
Impairment loss	2,978	—	3,406	591
Income taxes	194	119	296	281
Total other expenses	6,625	6,767	11,185	13,827
<b>Net loss</b>	<b>(4,530)</b>	<b>(3,012)</b>	<b>(5,867)</b>	<b>(6,381)</b>
Less: Net loss attributable to convertible non-controlling preferred interest	—	826	—	1,743
Less: Net loss attributable to non-controlling interests	1,629	—	2,133	—
<b>Net loss attributable to FrontView REIT, Inc (successor) and NADG NNN Property fund LP (predecessor)</b>	<b>\$ (2,901)</b>	<b>\$ (2,186)</b>	<b>\$ (3,734)</b>	<b>\$ (4,638)</b>
Weighted average number of common shares outstanding				
Basic	19,136,225	—	18,229,095	—
Diluted	27,827,037	—	27,824,932	—
Net loss per share attributable to common stockholders				
Basic	\$ (0.16)	\$ —	\$ (0.22)	\$ —
Diluted	\$ (0.16)	\$ —	\$ (0.22)	\$ —
<b>Comprehensive loss</b>				
Net loss	\$ (4,530)	\$ (3,012)	\$ (5,867)	\$ (6,381)
Other comprehensive loss				
Change in fair value of interest rate swaps	(1,322)	—	(1,511)	—
Comprehensive loss	(5,862)	(3,012)	(7,378)	(6,381)
Less: Comprehensive loss attributable to convertible non-controlling preferred interests	—	826	—	1,743
Less: Comprehensive loss attributable to convertible non-controlling interests	2,108	—	2,705	—
<b>Comprehensive loss attributable to NADG NNN Property Fund LP (Predecessor) and to FrontView REIT, Inc. (Successor)</b>	<b>\$ (3,754)</b>	<b>\$ (2,186)</b>	<b>\$ (4,673)</b>	<b>\$ (4,638)</b>

(1) Includes tenant reimbursement income of \$2.4 million and \$1.2 million for the three-month periods ending June 30, 2025, and 2024, respectively. Includes tenant reimbursement income of \$4.1 million and \$3.1 million for the six-month periods ending June 30, 2025, and 2024, respectively.

(2) Includes variable rent of \$163K and \$306K for the three-month periods ending June 30, 2025, and 2024, respectively. Includes variable rent of \$218K and \$749K for the six-month periods ending June 30, 2025, and 2024, respectively.



# GAAP Reconciliations to FFO and AFFO

(unaudited, in thousands except share and per share data)



	Three Month Ended June 30,		Six Month Ended June 30,	
	Successor 2025	Predecessor 2024	Successor 2025	Predecessor 2024
<b>Net loss</b>	<b>\$ (4,530)</b>	<b>\$ (3,012)</b>	<b>\$ (5,867)</b>	<b>\$ (6,381)</b>
Depreciation on real property and amortization of real estate intangibles	9,466	6,971	17,271	14,296
(Gain) loss on sale of real estate	(1,194)	51	(1,661)	(337)
Impairment loss on real estate held for investment	2,978	—	3,406	591
<b>Funds from operations (FFO)</b>	<b>\$ 6,720</b>	<b>\$ 4,010</b>	<b>\$ 13,149</b>	<b>\$ 8,169</b>
Straight-line rent adjustments	(286)	(446)	(408)	(777)
Amortization of financing transaction and discount costs	400	1,036	795	2,092
Amortization of above/below market lease intangibles	941	476	1,652	915
Stock-based compensation	200	—	815	—
Lease termination fees	—	(223)	—	(637)
Adjustment for structuring and public company readiness costs	89	23	290	74
Other non-recurring expenses <sup>(1)</sup>	964	16	964	45
<b>Adjusted funds from operations (AFFO)</b>	<b>\$ 9,028</b>	<b>\$ 4,892</b>	<b>\$ 17,257</b>	<b>\$ 9,881</b>
Diluted weighted average shares outstanding	27,827,037	—	27,824,932	—
Net loss per diluted share	\$ (0.16)	\$ —	\$ (0.22)	\$ —
FFO per diluted share	\$ 0.24	\$ —	\$ 0.47	\$ —
AFFO per diluted share	\$ 0.32	\$ —	\$ 0.62	\$ —

(1) Other non-recurring expenses include one-time legal expenses, deal pursuit costs and other non-recurring items.

# GAAP Reconciliation to Adjusted EBITDAre and Cash NOI

(unaudited, in thousands)



	Three Months Ended June 30, 2025
<b>Net loss</b>	<b>\$ (4,530)</b>
Depreciation and amortization	10,407
Interest expense	4,647
Income taxes	194
<b>EBITDA</b>	<b>\$ 10,718</b>
Gain on sale of real estate	(1,194)
Impairment loss on real estate held for investment	2,978
<b>EBITDAre</b>	<b>\$ 12,502</b>
Adjustment for current period investment activity <sup>(1)</sup>	383
Adjustment for current period disposition activity <sup>(2)</sup>	(72)
Adjustment for non-cash compensation expense <sup>(3)</sup>	200
Adjustment to exclude non-recurring expenses <sup>(4)</sup>	1,053
Adjustment to exclude net write-offs of accrued rental income	158
<b>Adjusted EBITDAre</b>	<b>\$ 14,224</b>
General and administrative, net of non-recurring	1,962
<b>Adjusted net operating income</b>	<b>\$ 16,186</b>
Straight-line rental revenue, net	(277)
<b>Adjusted cash NOI</b>	<b>\$ 15,909</b>
<b>Annualized EBITDAre</b>	<b>\$ 50,008</b>
<b>Annualized adjusted EBITDAre</b>	<b>\$ 56,896</b>
<b>Annualized adjusted NOI</b>	<b>\$ 64,744</b>
<b>Annualized adjusted cash NOI</b>	<b>\$ 63,636</b>

(1) Reflects an adjustment to give effect to all investments during the quarter as if they had been acquired as of the beginning of the quarter.

(2) Reflects an adjustment to give effect to all dispositions during the quarter as if they had been sold as of the beginning of the quarter.

(3) Reflects an adjustment to exclude non-cash stock-based compensation expense.

(4) Reflects an adjustment to exclude non-recurring expenses, including structuring and public company readiness costs, lease termination fees, legal one-time expenses, and other non-recurring income or expenses.

# Balance Sheet

(unaudited, in thousands)



Assets	June 30, 2025	December 31, 2024
<b>Assets</b>		
Real estate held for investment, at cost		
Land	\$ 330,193	\$ 332,944
Buildings and improvements	401,954	386,462
Total real estate held for investment, at cost	732,147	719,406
Less accumulated depreciation	(43,935)	(40,398)
Real estate held for investment, net	688,212	679,008
Assets held for sale	28,619	5,898
Mortgage loans receivable	7,134	—
Cash and cash equivalents	8,363	5,094
Intangible lease assets, net	106,759	114,868
Other assets	17,425	16,941
<b>Total assets</b>	<b>\$ 856,512</b>	<b>\$ 821,809</b>
<b>Liabilities and equity</b>		
<b>Liabilities</b>		
Debt, net	\$ 316,892	\$ 266,538
Intangible lease liabilities, net	14,520	14,735
Accounts payable and accrued liabilities	21,149	17,858
<b>Total liabilities</b>	<b>352,561</b>	<b>299,131</b>
<b>Equity</b>		
Common stock, par value \$0.01 per share	204	173
Additional paid-in capital	389,378	331,482
Accumulated deficit	(18,727)	(6,834)
Accumulated other comprehensive loss	(965)	—
Total FrontView REIT, Inc. equity	369,890	324,821
Non-controlling interests in the OP	134,061	197,857
<b>Total equity</b>	<b>503,951</b>	<b>522,678</b>
<b>Total liabilities and equity</b>	<b>\$ 856,512</b>	<b>\$ 821,809</b>



# Net Debt Metrics, Fixed Charge Coverage and Covenants

(unaudited, in thousands)



	Maturity Date	Interest Rate	June 30, 2025
<b>Debt</b>			
Term Loan	3-Oct-27 <sup>(1)</sup>	Adjusted SOFR + 1.20% <sup>(2, 3)</sup>	\$ 200,000
Revolving Credit Facility	3-Oct-27 <sup>(1)</sup>	Adjusted SOFR + 1.20% <sup>(2)</sup>	118,500
<b>Gross Debt</b>			<b>\$ 318,500</b>
Cash and Cash Equivalents			(8,363)
<b>Net Debt</b>			<b>\$ 310,137</b>
Net Debt to Annualized EBITDAre			6.2 x
Net Debt to Annualized Adjusted EBITDAre			5.5 x

## Covenants

The following is a summary of key financial covenants for the Company's unsecured debt instruments

- The covenants associated with the Revolving Credit Facility are reported to the respective lenders via quarterly covenant reporting packages
- These calculations, which are not based on U.S. GAAP measurements, are presented to investors to show that as of June 30, 2025, the Company believes it is in compliance with the covenants

Fixed Charge Coverage Ratio (FCCR)	June 30, 2025
Interest Expense	\$ 4,647
Less: Non-Cash Interest	(400)
Fixed Charges	4,247
<b>Annualized Fixed Charges</b>	<b>\$ 16,988</b>
<b>Annualized Adjusted EBITDAre / Annualized Fixed Charges</b>	<b>3.3 x</b>

Covenants	Required	Revolving Credit Facility
Total Leverage Ratio	≤ 60 %	36.2 %
Adjusted EBITDA to Fixed Charges Ratio	≥ 1.50 to 1.00	3.3 x
Secured Leverage Ratio	≤ 40 %	0.0 %
Unencumbered NOI to Unsecured Interest Expense Ratio	≥ 1.75 to 1.00	3.6 x
Unsecured Leverage Ratio	≤ 60 %	36.2 %
Tangible Net Worth	≥ \$ 380,032	\$ 561,347

(1) The loans each contain two 12-month extension options, subject to a 0.125% extension fee.

(2) The approximate one-month SOFR rate on June 30, 2025, was 4.45%, plus a 10-basis point adjustment ("Adjusted SOFR").

(3) Hedged \$200 million of floating rate SOFR at 3.664%, effectively fixing the term loan at a rate of 4.964% through initial maturity.

# Net Asset Value Components

(unaudited, in thousands)



	June 30, 2025
<b>Real estate portfolio</b>	
Number of properties	319
Rentable square feet	2,594
Rent per square foot	\$ 24.01
WALT	7.3 Years
<b>Annualized base rent (ABR)<sup>(1)</sup></b>	<b>\$ 62,293</b>
<b>Annualized adjusted cash NOI<sup>(1)</sup></b>	<b>\$ 63,635</b>
<b>Tangible assets</b>	
Cash and cash equivalents	8,363
Mortgage receivable principal outstanding	7,134
Other tangible assets <sup>(2)</sup>	12,796
<b>Total tangible assets</b>	<b>\$ 28,293</b>
<b>Debt</b>	
Term loan	200,000
Revolving credit facility	118,500
<b>Total debt</b>	<b>\$ 318,500</b>
<b>Tangible liabilities</b>	
Dividends payable	6,102
Other tangible liabilities <sup>(3)</sup>	15,121
<b>Total tangible liabilities</b>	<b>\$ 21,223</b>
<b>Shares outstanding</b>	
Common stock	20,430,096
Operating partnership units	7,404,574
<b>Total common stock and OP units outstanding</b>	<b>27,834,670</b>

(1) Excludes vacant properties with net book value of \$12.3 million.

(2) Includes components of accounts receivable (net) and deferred rent receivables (net) that are realizable assets.

(3) Includes accounts payable and accrued liabilities.

# Capital Structure and Liquidity

(unaudited, in thousands)



June 30, 2025

## Equity

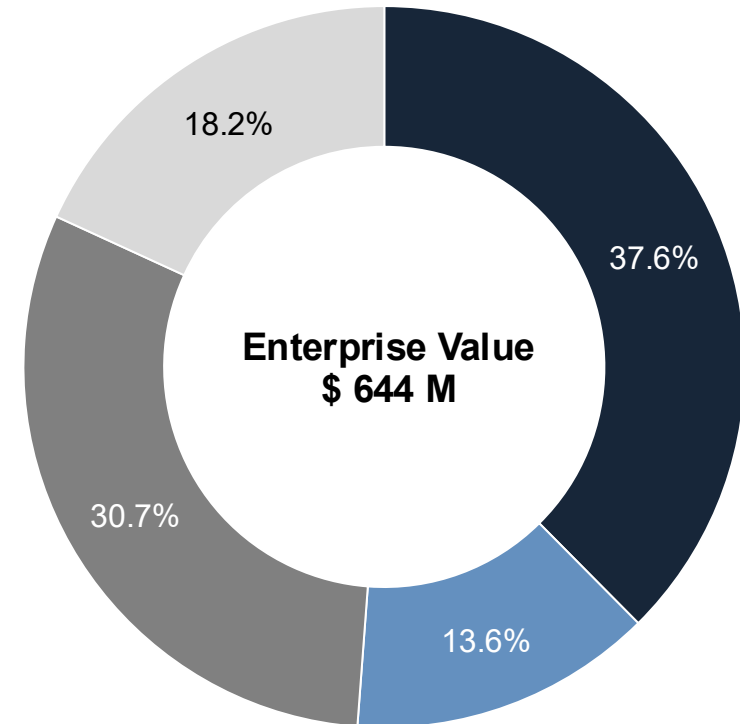
Shares of Common Stock	20,430
OP Units	7,405
Common Stock & OP Units	27,835
Price Per Share/Unit as of June 30, 2025	\$ 12.00
<b>Implied Equity Market Capitalization</b>	<b>\$ 334,020</b>
% of Total Capitalization	51.2 %

## Debt

Term Loan	\$ 200,000
Revolving Credit Facility	118,500
<b>Total Debt</b>	<b>\$ 318,500</b>
% of Total Capitalization	48.8 %
Total Capitalization	\$ 652,520
Less: Cash and Cash Equivalents	(8,363)
<b>Enterprise Value</b>	<b>\$ 644,157</b>

## Liquidity

	Commitment <sup>(1)</sup>	Outstanding	Available
Revolver Credit Facility	\$ 250,000	\$ 118,500	\$ 131,500
Cash and Cash Equivalents			8,363
<b>Total Liquidity</b>			<b>\$ 139,863</b>



■ Common Stock ■ OP Units ■ Term Loan ■ Revolving Credit Facility

(1) The Company may elect to request an increase to the existing revolving commitments and/or the establishment of one or more new commitments for an aggregate maximum amount of \$200.0 million, subject to customary conditions.

# Capital Deployment

Investment activity and dispositions since IPO

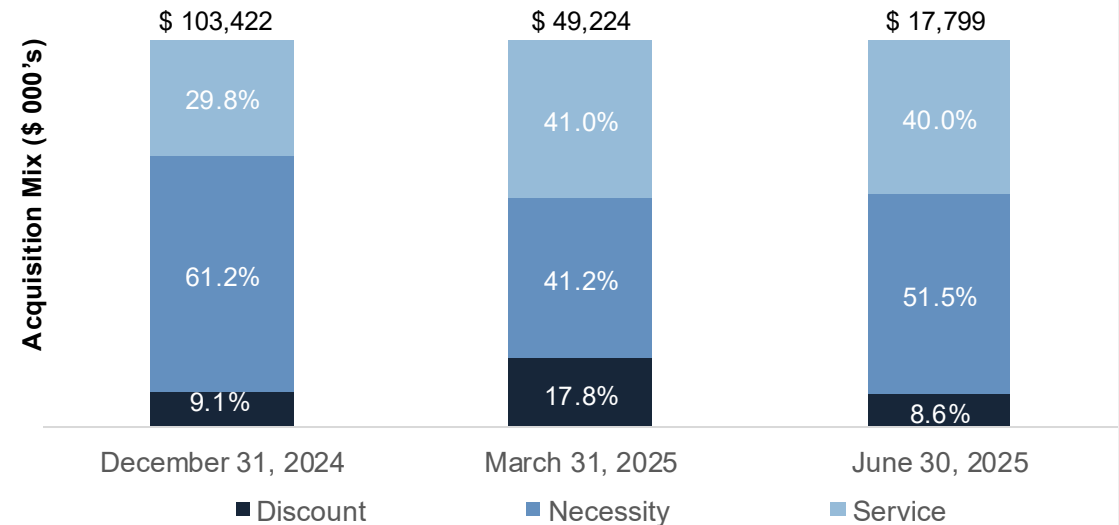
# Capital Deployment Activity

Moderating capital deployment volumes to optimize deal selections and maintain conservative leverage



Acquisitions (\$ in thousands)	December 31, 2024	March 31, 2025	June 30, 2025
Number of properties	29	17	5
Average annual escalators	1.7 %	1.6 %	2.4 %
Investment grade %	27.0 %	29.2 %	17.9 %
Weighted average lease term (WALT)	11.1	12.9	11.0
<b>Purchase price</b>	<b>\$ 103,422</b>	<b>\$ 49,224</b>	<b>\$ 17,799</b>
<b>Cash capitalization rate</b>	<b>7.93 %</b>	<b>7.90 %</b>	<b>8.17 %</b>
<b>Economic yield</b>	<b>8.54 %</b>	<b>8.18 %</b>	<b>9.35 %</b>

## Representative tenant concepts



Note: Weightings are based on purchase price.

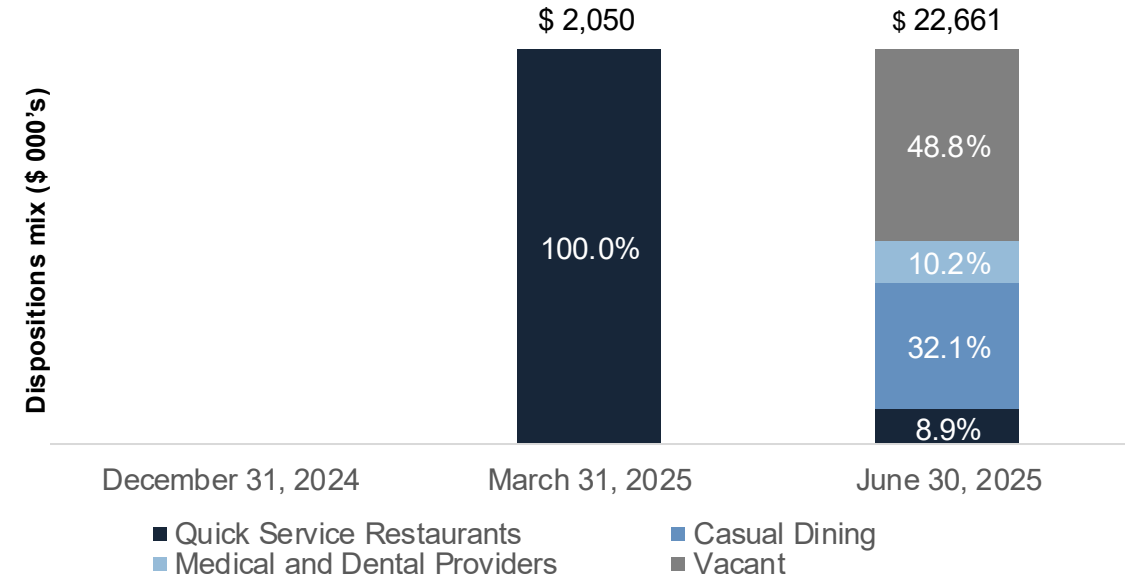
# Disposition Activity

Non-core dispositions, improving portfolio metrics, and funding acquisitions



Dispositions (\$ in thousands)	December 31, 2024	March 31, 2025	June 30, 2025
Number of vacant properties	—	—	4
Number of leased properties	—	1	5
Gross proceeds on vacant properties	—	—	\$ 11,055
Gross proceeds on leased properties	—	\$ 2,050	\$ 11,606
Weighted average lease term (WALT)	—	13.8	8.0
<b>Total gross proceeds</b>	—	<b>\$ 2,050</b>	<b>\$ 22,661</b>
<b>Disposition capitalization rate on leased properties</b>	—	<b>6.88 %</b>	<b>6.75 %</b>

## Representative tenant concepts



Note: Weightings are based on gross proceeds.



# Portfolio Detail

Top 60 tenant concepts, industry and geographic mix

# Diversification: Top 60 Tenant Concepts



#	Tenant Brand	# of Properties <sup>(1)</sup>	% of ABR	Investment Grade Rated	Credit Rating (S&P / Moody's / Fitch)
1	Dollar Tree	13	3.3 %	✓	BBB / Baa2
2	Fast Pace Urgent Care	8	2.7 %	—	N/A
3	Verizon	8.5	2.6 %	✓	BBB+ / Baa1 / A-
4	Adams Auto Group	3	2.3 %	—	N/A
5	Oak Street Health	5.5	2.1 %	—	N/A
6	IHOP	6	2.0 %	—	N/A
7	Mammoth Car Wash	6	2.0 %	—	N/A
8	Raising Canes	6	1.9 %	—	N/A
9	Bank of America	5	1.9 %	✓	A- / Aa2 / AA-
10	LA-Z-Boy	3	1.8 %	—	N/A
11	CVS	4	1.7 %	✓	BBB / Baa2 / BBB
12	AT&T	4	1.7 %	✓	BBB / Baa2 / BBB+
13	T-Mobile	7.5	1.7 %	✓	BBB / Baa2 / BBB+
14	Chili's	3	1.6 %	—	N/A
15	Wendy's	7	1.5 %	—	N/A
16	PNC Bank	5	1.5 %	✓	A / A+
17	Wells Fargo	2.5	1.4 %	✓	A+ / A1 / A+
18	Advance Auto Parts	7	1.4 %	—	N/A
19	Walgreens	3	1.4 %	—	N/A
20	St. Joseph Hospice	2	1.4 %	—	N/A
21	Heartland Dental	5	1.3 %	—	N/A
22	Burger King	5	1.2 %	—	N/A
23	Lowe's Home Improvement	1	1.2 %	✓	BBB+
24	VASA Fitness	0.5	1.1 %	—	N/A
25	Charles Schwab	1	1.1 %	✓	A- / A
26	Aspen Dental	4.5	1.1 %	—	N/A
27	Parachute Plasma	2	1.1 %	—	N/A
28	WSS	2	1.0 %	—	N/A
29	Wellnow	4	1.0 %	—	N/A
30	Walmart	1	1.0 %	✓	AA / Aa2 / AA
31	Best Buy	1	1.0 %	✓	BBB+ / A3
32	Andy's Frozen Custard	4	1.0 %	—	N/A

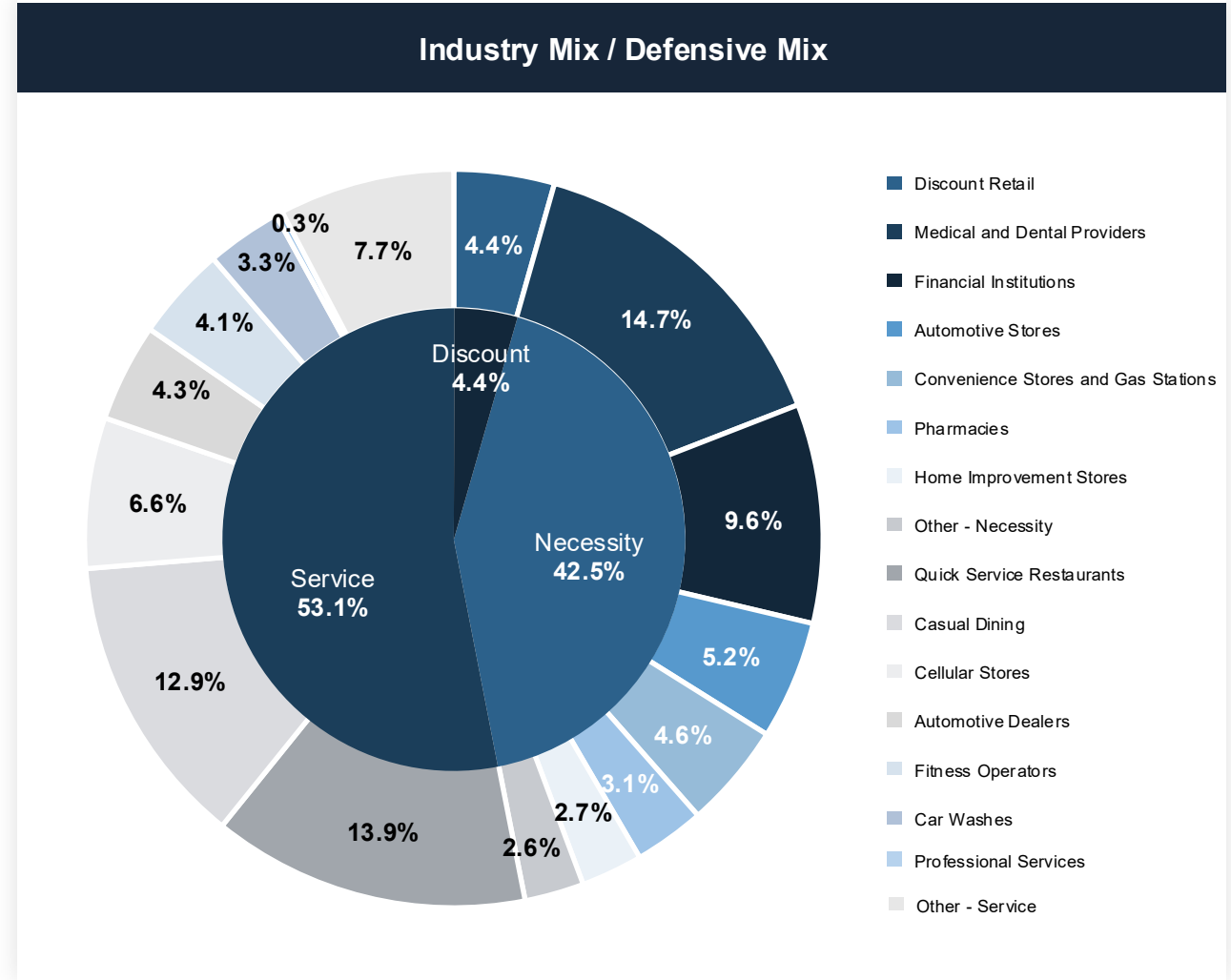
#	Tenant Brand	# of Properties <sup>(1)</sup>	% of ABR	Investment Grade Rated	Credit Rating (S&P / Moody's / Fitch)
33	Edge Fitness	1	1.0 %	—	N/A
34	Chase Bank	2.5	1.0 %	✓	A / Aa3 / AA-
35	Floor & Decor	1	1.0 %	—	N/A
36	LA Fitness	2	1.0 %	—	N/A
37	Tricolor	1	0.9 %	—	N/A
38	Applebee's	3	0.9 %	—	N/A
39	Stop & Shop Gas	3	0.9 %	✓	BBB+
40	Sleep Number	2	0.8 %	—	N/A
41	Chuy's Mexican	2	0.8 %	✓	BBB / Baa2 / BBB
42	Texas Roadhouse	2	0.8 %	—	N/A
43	Take 5 Oil Change	4.5	0.7 %	—	N/A
44	First Bank	3	0.7 %	—	N/A
45	Chipotle	3	0.7 %	—	N/A
46	Taco Bell	3	0.7 %	—	N/A
47	Auto Saavy	1	0.7 %	—	N/A
48	Trophy Fuel & Wash	1	0.7 %	—	N/A
49	Physicians Immediate Care	1.5	0.7 %	—	N/A
50	Sonic	4	0.7 %	—	N/A
51	7-Eleven	3	0.7 %	✓	A- / Aa3
52	Harbor Freight	2	0.6 %	—	N/A
53	O'Reilly Auto Parts	4	0.6 %	✓	BBB+ / Baa1
54	AutoZone	3	0.6 %	✓	BBB / Baa1 / BBB
55	Dollar General	3	0.6 %	✓	BBB / Baa3
56	Planet Fitness	1	0.6 %	—	N/A
57	McAlister's Deli	2.5	0.6 %	—	N/A
58	Friendly's	2	0.6 %	—	N/A
59	Starbucks	3	0.6 %	✓	BBB+ / Baa1
60	Range USA	1	0.6 %	—	N/A
<b>Top 60</b>		<b>205</b>	<b>71.8 %</b>		
<b>Other (61 through 157)</b>		<b>114</b>	<b>28.2 %</b>		
<b>Total Portfolio</b>		<b>319</b>	<b>100.0 %</b>		

(1) Includes two-tenant properties.

# Diversification: Tenant Industry

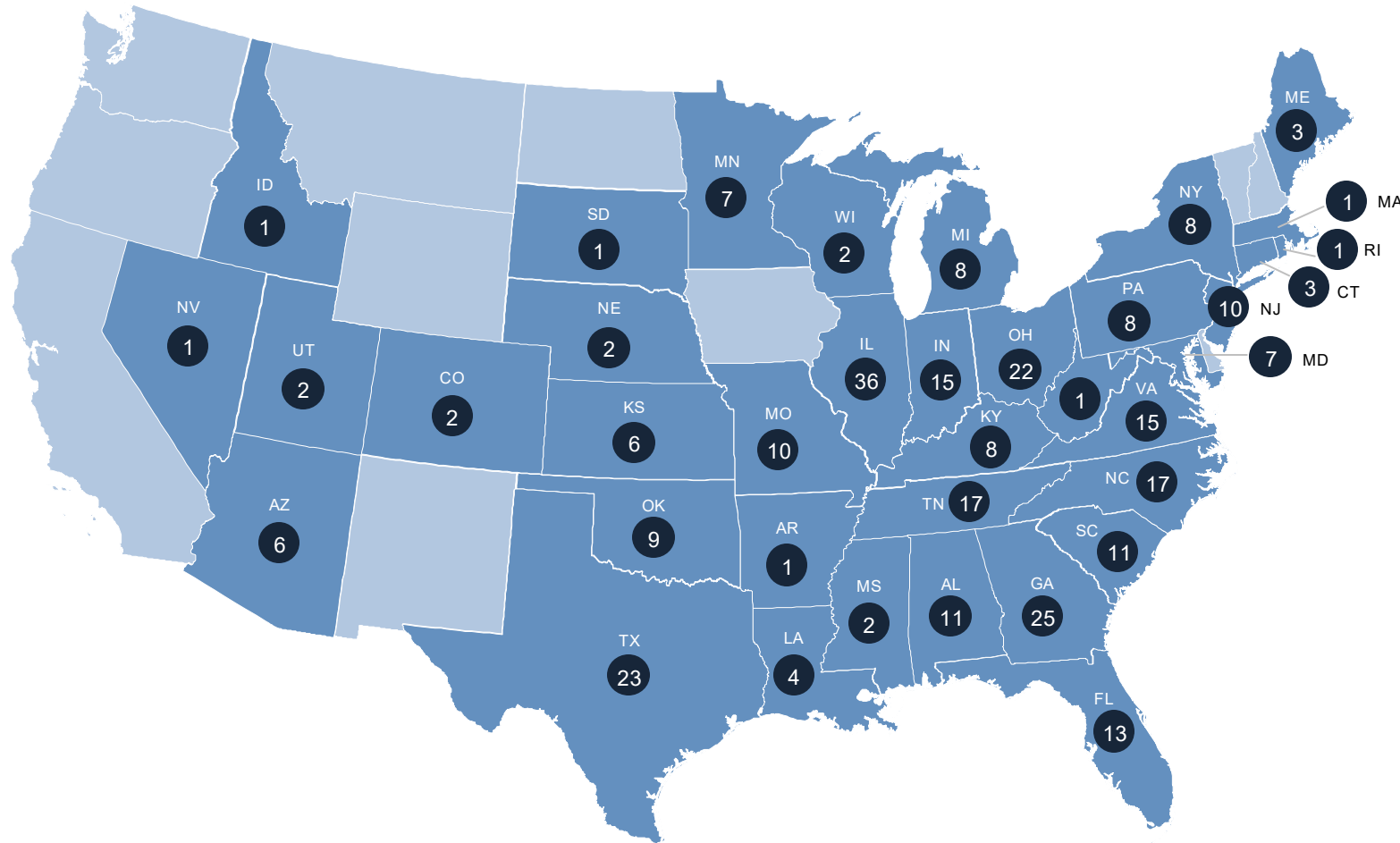


Industry	Defensive Mix	# of Properties <sup>(1)</sup>	ABR (000s)	% of ABR	Square Feet (000s)	Rent / SQFT
Medical and Dental Providers	Necessity	43	\$ 9,198	14.7 %	284	\$ 32.39
Quick Service Restaurants	Service	61.5	\$ 8,662	13.9 %	199	\$ 43.53
Casual Dining	Service	42	\$ 8,062	12.9 %	267	\$ 30.19
Financial Institutions	Necessity	26	\$ 5,977	9.6 %	146	\$ 40.94
Cellular Stores	Service	21.5	\$ 4,092	6.6 %	97	\$ 42.19
Automotive Stores	Necessity	27	\$ 3,219	5.2 %	162	\$ 19.87
Convenience Stores and Gas Stations	Necessity	15	\$ 2,855	4.6 %	40	\$ 71.38
Discount Retail	Discount	17.5	\$ 2,766	4.4 %	198	\$ 13.97
Automotive Dealers	Service	6	\$ 2,681	4.3 %	87	\$ 30.82
Fitness Operators	Service	5	\$ 2,523	4.1 %	170	\$ 14.84
Car Washes	Service	10	\$ 2,033	3.3 %	33	\$ 61.61
Pharmacies	Necessity	7	\$ 1,935	3.1 %	81	\$ 23.89
Home Improvement Stores	Necessity	5	\$ 1,689	2.7 %	263	\$ 6.42
Professional Services	Service	1	\$ 173	0.3 %	4	\$ 43.25
Other - Service	Service	26.5	\$ 4,836	7.7 %	279	\$ 17.33
Other - Necessity	Necessity	5	\$ 1,592	2.6 %	284	\$ 5.61
<b>Total</b>	<b>—</b>	<b>319</b>	<b>\$ 62,293</b>		<b>2,594</b>	<b>\$ 24.01</b>



(1) Includes two-tenant properties.

# Diversification: Property Map



**319**  
Properties

**37**  
States

# Diversification: Geography



State	# of Properties <sup>(1)</sup>	Square Feet (000s)	ABR (000s)	% of ABR	Rent / SQFT
IL	36	376	\$ 8,684	13.9 %	\$ 23.10
GA	25	170	\$ 5,039	8.1 %	\$ 29.64
TX	23	133	\$ 4,745	7.7 %	\$ 35.68
NC	17	94	\$ 3,353	5.4 %	\$ 35.67
TN	17	113	\$ 3,335	5.4 %	\$ 29.51
OH	22	130	\$ 3,157	5.1 %	\$ 24.28
IN	15	79	\$ 2,675	4.3 %	\$ 33.86
PA	8	145	\$ 2,502	4.0 %	\$ 17.26
VA	15	76	\$ 2,445	4.0 %	\$ 32.17
FL	13	92	\$ 2,327	3.7 %	\$ 25.29
NY	8	242	\$ 2,131	3.4 %	\$ 8.81
SC	11	91	\$ 1,886	3.0 %	\$ 20.73
AL	11	49	\$ 1,788	2.9 %	\$ 36.49
MO	10	60	\$ 1,714	2.8 %	\$ 28.57
MN	7	72	\$ 1,445	2.3 %	\$ 20.07
MI	8	49	\$ 1,410	2.3 %	\$ 28.78
MD	7	50	\$ 1,406	2.3 %	\$ 28.12
NJ	10	55	\$ 1,384	2.2 %	\$ 25.16
AZ	6	40	\$ 1,353	2.2 %	\$ 33.83

State	# of Properties <sup>(1)</sup>	Square Feet (000s)	ABR (000s)	% of ABR	Rent / SQFT
OK	9	48	\$ 1,308	2.1 %	\$ 27.25
LA	4	47	\$ 1,210	1.9 %	\$ 25.74
ME	3	186	\$ 1,062	1.7 %	\$ 5.71
KS	6	41	\$ 1,058	1.7 %	\$ 25.80
KY	8	40	\$ 1,022	1.6 %	\$ 25.55
CT	3	9	\$ 610	1.0 %	\$ 67.78
ID	1	6	\$ 424	0.7 %	\$ 70.67
MS	2	13	\$ 417	0.7 %	\$ 32.08
UT	2	22	\$ 340	0.5 %	\$ 15.45
CO	2	10	\$ 330	0.5 %	\$ 33.00
NE	2	20	\$ 325	0.5 %	\$ 16.25
WI	2	15	\$ 310	0.5 %	\$ 20.67
NV	1	4	\$ 259	0.4 %	\$ 64.75
AR	1	3	\$ 218	0.3 %	\$ 72.67
RI	1	1	\$ 182	0.3 %	\$ 182.00
SD	1	10	\$ 155	0.2 %	\$ 15.50
MA	1	2	\$ 143	0.2 %	\$ 71.50
WV	1	1	\$ 141	0.2 %	\$ 141.00
<b>Total</b>	<b>319</b>	<b>2,594</b>	<b>\$ 62,293</b>	<b>100.0 %</b>	<b>\$ 24.01</b>

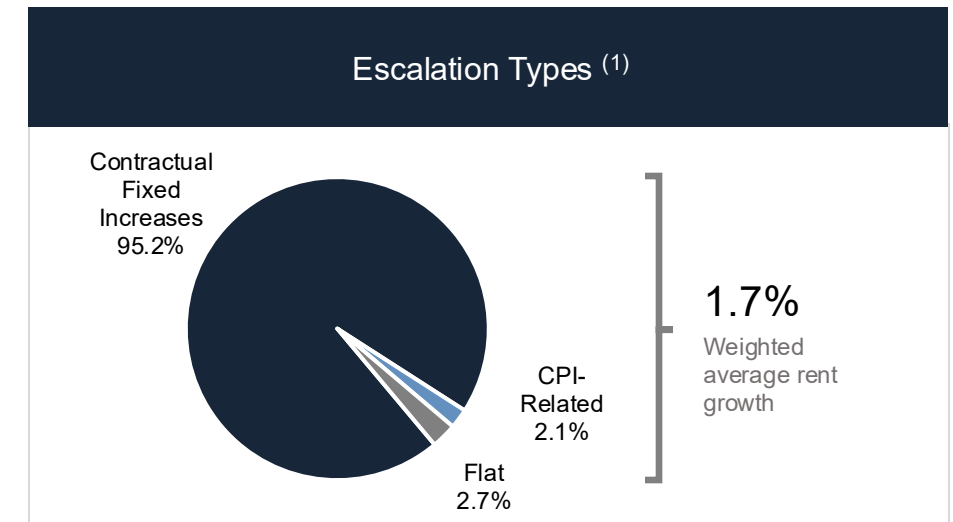
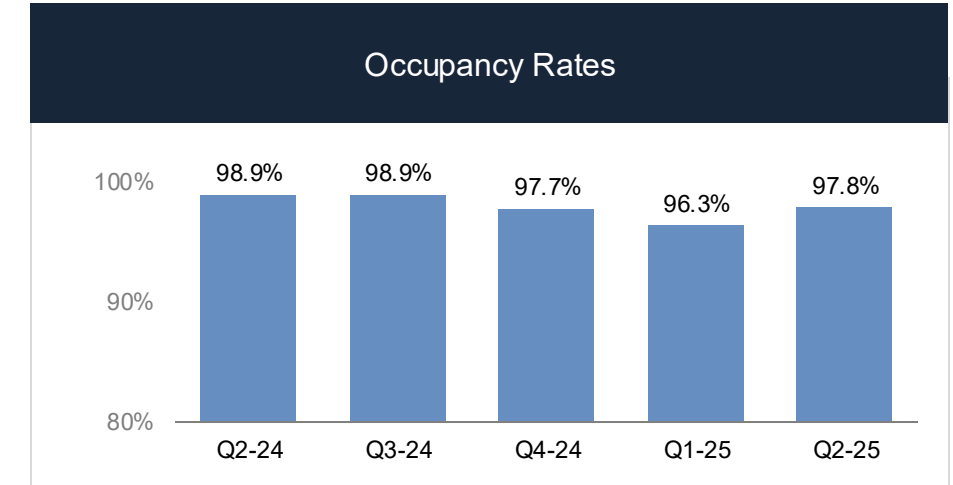
(1) Includes two-tenant properties.

# Lease Expirations, Occupancy and Escalations

(in thousands)



Year	Number of Properties	Square Feet (000s)	ABR (000s)	% of ABR
Remainder of 2025	2	13	\$ 441	0.7 %
2026	19.5	118	\$ 3,532	5.7 %
2027	31.5	385	\$ 7,012	11.2 %
2028	27	149	\$ 4,380	7.0 %
2029	30.5	205	\$ 6,082	9.8 %
2030	32.5	203	\$ 6,592	10.6 %
2031	23.5	146	\$ 4,465	7.2 %
2032	21.5	401	\$ 5,323	8.5 %
2033	13	80	\$ 2,556	4.1 %
2034	20.5	164	\$ 4,142	6.6 %
Thereafter	90.5	683	\$ 17,768	28.6 %
Vacant <sup>(1)</sup>	7	47	—	—
<b>Total</b>	<b>319</b>	<b>2,594</b>	<b>\$ 62,293</b>	<b>100.0 %</b>



(1) Includes contractual rent increases on tenant renewal options to the extent a lease is at the end of its initial term. Approximately 23% escalate annually, 2.7% have no escalations, and the rest escalate over longer periods.



# Non-GAAP Definitions and Explanations



## Adjusted NOI, Annualized Adjusted NOI, and Cash NOI:

Adjusted NOI, Annualized Adjusted NOI, Cash NOI, and GAAP NOI are non-GAAP financial measures which we use to assess our operating results. We compute Adjusted NOI as Adjusted EBITDAre and exclude general and administration expenses. We further adjust Adjusted NOI for non-cash revenue components of straight-line rent and other amortization expense to derive Adjusted Cash NOI. We believe Adjusted NOI and Adjusted Cash NOI provide useful and relevant information because they reflect only those income and expense items that are incurred at the property level. Adjusted NOI and Adjusted Cash NOI are not measurements of financial performance under GAAP and may not be comparable to similarly titled measures of other companies. You should not consider our measures as alternatives to net income or cash flows from operating activities determined in accordance with GAAP. Annualized Adjusted NOI is calculated by multiplying Adjusted NOI for the applicable quarter by four and Annualized Adjusted Cash NOI is calculated by multiplying Adjusted Cash NOI for the applicable quarter by four. We believe these annualized figures provide a meaningful estimate of our current run rate for all of our investments as of the end of the most recently completed quarter given the contractual nature of our long-term net leases. You should not unduly rely on these measures as they are based on assumptions and estimates that may prove to be inaccurate. Our actual reported NOI for future periods may be significantly different from our Annualized Adjusted NOI and Annualized Adjusted Cash NOI.

## EBITDA, EBITDAre, Adjusted EBITDAre, and Annualized Adjusted EBITDAre:

EBITDA, EBITDAre, Adjusted EBITDAre, and Annualized Adjusted EBITDAre are non-GAAP financial measures. We compute EBITDA as earnings before interest, income taxes and depreciation and amortization. EBITDA is a measure commonly used in our industry. We believe that this ratio provides investors and analysts with a measure of our leverage that includes our operating results unaffected by the differences in capital structures, capital investment cycles and useful life of related assets compared to other companies in our industry. In 2017, Nareit issued a white paper recommending that companies that report EBITDA also report EBITDAre in financial reports. We compute EBITDAre in accordance with the definition adopted by Nareit. Nareit defines EBITDAre as EBITDA (as defined above) excluding gains (loss) from the sales of depreciable property and provisions for impairment on investment in real estate. We believe EBITDA and EBITDAre are useful to investors and analysts because they provide important supplemental information about our operating performance exclusive of certain non-cash and other costs. We compute adjusted EBITDAre as EBITDAre for the applicable quarter, as adjusted to (i) reflect all investment and disposition activity that took place during the applicable quarter as if each transaction had been completed on the first day of the quarter, (ii) exclude certain GAAP income and expense amounts that we believe are infrequent and unusual in nature because they relate to unique circumstances or transactions that had not previously occurred and which we do not anticipate occurring in the future, (iii) eliminate the impact of lease termination fees from certain of our tenants, and (iv) exclude non-cash stock-based compensation expense. Annualized adjusted EBITDAre is calculated by multiplying adjusted EBITDAre for the applicable quarter by four, which we believe provides a meaningful estimate of our current run rate for all of our investments as of the end of the most recently completed quarter given the contractual nature of our long-term net leases. You should not unduly rely on this measure as it is based on assumptions and estimates that may prove to be inaccurate. Our actual reported EBITDAre for future periods may be significantly different from our annualized adjusted EBITDAre. Our reported EBITDA, EBITDAre, Adjusted EBITDAre, and Annualized Adjusted EBITDAre may not be comparable to similarly titled measures of other companies. You should not consider these measures as alternatives to net income or cash flows from operating activities determined in accordance with GAAP.

## Funds From Operations (FFO) and Adjusted Funds From Operations (AFFO):

FFO and AFFO are non-GAAP measures. We believe the use of FFO and AFFO are useful to investors because they are widely accepted industry measures used by analysts and investors to compare the operating performance of REITs. FFO and AFFO should not be considered alternatives to net income as a performance measure or to cash flows from operations, as reported on our statement of cash flows, or as a liquidity measure and should be considered in addition to, and not in lieu of, GAAP financial measures. We compute FFO in accordance with the standards established by the Board of Governors of Nareit. Nareit defines FFO as GAAP net income or loss adjusted to exclude net gains (losses) from sales of certain depreciated real estate assets, depreciation and amortization expense from real estate assets, gains and losses from change in control, and impairment charges related to certain previously depreciated real estate assets. To derive AFFO, we modify the Nareit computation of FFO to include other adjustments to GAAP net income related to certain non-cash or non-recurring revenues and expenses, including straight-line rents, cost of debt extinguishments, amortization of lease intangibles, amortization of debt issuance costs, amortization of net mortgage premiums, (gain) loss on interest rate swaps and other non-cash interest expense, realized gains or losses on foreign currency transactions, internalization expenses, structuring and public company readiness costs, extraordinary items, and other specified non-cash items. We believe that such items are not a result of normal operations and thus we believe excluding such items assists management and investors in distinguishing whether changes in our operations are due to growth or decline of operations at our properties or from other factors.

## Fixed Charge Coverage Ratio (FCCR):

The adjusted EBITDA to fixed charge ratio is the ratio of adjusted EBITDA to fixed charges as of the last day of any fiscal quarter. Adjusted EBITDA is computed as net income adjusted for depreciation and amortization, interest expense, income tax expense, extraordinary or nonrecurring items, fees in connection with debt financing, acquisitions and dispositions and capital markets transactions, non-cash items and equity in net income of unconsolidated subsidiaries minus a reserve for replacements with respect to certain properties. Fixed charges are computed on a consolidated basis as interest expense (excluding amortization of fees paid in cash and discounts and premiums on debt), plus regularly scheduled principal repayments of debt (excluding any balloon or similar payments), plus any preferred dividends payable in cash.

# Other Definitions and Explanations

**Adjusted Secured Overnight Financing Rate (SOFR):**

We define Adjusted SOFR as the current one-month term SOFR plus an adjustment of 0.10% per the terms of our credit facilities.

**Annualized Base Rent (ABR):**

We define ABR as the annualized contractual cash rent due for the last month of the reporting period and adjusted to remove rent from properties sold during the month and to include a full month of contractual cash rent for properties acquired during the last month of the reporting period.

**Brand:**

Represent the brand or trade name the tenant operates.

**Cash Capitalization Rate:**

Cash Capitalization Rate is calculated by measuring the annualized contractual cash rent at the time of closing, divided by the purchase price of the related property.

**Defensive Mix:**

Defensive Mix is a term used by us to categorize tenants determined by their area of focus: (1) Necessity, which represents tenants providing essential services or selling essential goods to consumers and includes Medical and Dental Providers, Financial Institutions, Automotive Stores, Convenience & Gas Stores, Pharmacies, and Home Improvement Stores, (2) Service, which represents tenants who provide specific services to consumers and includes Quick Service Restaurants, Casual Diners, Automotive Dealers, Fitness Operators, Car Washed, and Professional Service, and (3) Discount, which represents tenants that sell merchandise and goods a significant discount compared to traditional retailers.

**Disposition Capitalization Rate:**

Disposition Capitalization Rate is calculated by the ABR on the date of the related disposition divided by the gross sale price.

**Economic Yield:**

Economic Yield is calculated by dividing contractual cash rent, inclusive of fixed rent increases and escalators determined by CPI, by the existing lease term, expressed as a percentage of the purchase price.

# Other Definitions and Explanations (Continued)

**GAAP:**

GAAP is the Generally Accepted Accounting Principles in the United States.

**Gross Debt:**

We define Gross Debt as total debt, net plus debt issuance costs and original issuance discount.

**Net Debt:**

Net Debt is a non-GAAP financial measure. We define Net Debt as our Debt less cash and cash equivalents.

**Occupancy:**

Occupancy or a specified percentage of our portfolio that is “occupied” or “leased” means as of a specified date (i) the number of properties that are subject to a signed lease divided by (ii) the total number of properties in our portfolio.

**Purchase Price:**

Purchase Price is represented by the contractual acquisition price of the related property, excluding any transaction costs or other capital expenditures.

**Tenant:**

Tenant represents the legal entity responsible for fulfilling obligations under the lease agreement.

**WALT:**

WALT represents the remaining average lease term of our leases, weighted by rent, and excluding lease renewal options and investments in mortgage loans.

# Forward-Looking and Cautionary Statements



## About the Data

This data and other information described herein are as of and for the three months ended June 30, 2025, unless otherwise indicated. Future performance may not be consistent with past performance and is subject to change and inherent risks and uncertainties. This information should be read in conjunction with FrontView's Quarterly Report on Form 10-Q as of and for the period ended June 30, 2025, including the financial statements and the management's discussion and analysis of financial condition and results of operations sections.

## Forward Looking Statements

Information set forth herein contains forward-looking statements, which reflect our current views regarding our business, financial performance, growth prospects and strategies, market opportunities, and market trends. Forward-looking statements include all statements that are not historical facts. In some cases, you can identify these forward-looking statements by the use of words such as "outlook," "believes," "expects," "potential," "continues," "may," "will," "should," "could," "would be," "seeks," "approximately," "projects," "predicts," "intends," "plans," "estimates," "anticipates," or the negative version of these words or other comparable words. All of the forward-looking statements herein are subject to various risks and uncertainties. Assumptions relating to the foregoing involve judgments with respect to, among other things, future economic, competitive and market conditions, and future business decisions, all of which are difficult or impossible to predict accurately and many of which are beyond our control. Although we believe that the expectations reflected in such forward-looking statements are based on reasonable assumptions, our actual results, performance, and achievements could differ materially from those expressed in or by the forward-looking statements and may be affected by a variety of risks and other factors. Accordingly, there are or will be important factors that could cause actual outcomes or results to differ materially from such forward-looking statements. These factors include, but are not limited to, risks and uncertainties related to general economic conditions, including but not limited to increases in the rate of inflation and/or interest rates, local real estate conditions, tenant financial health, and property acquisitions and the timing of these investments and acquisitions. These and other risks, assumptions, and uncertainties are described in our filings with the SEC, which are available on the SEC's website at [www.sec.gov](http://www.sec.gov).

You are cautioned not to place undue reliance on any forward-looking statements included herein. All forward-looking statements are made as of the date of this document and the risk that actual results, performance, and achievements will differ materially from the expectations expressed or referenced herein will increase with the passage of time. We undertake no obligation to publicly update or review any forward-looking statement, whether as a result of new information, future developments, or otherwise, except as required by law.

## IP Disclaimer

This document contains references to copyrights, trademarks, trade names, and service marks that belong to other companies. FrontView REIT, Inc. is not affiliated or associated with, and is not endorsed by and does not endorse, such companies or their products or services.