

Proposed Consolidation of Finland's Central Lapland Greenstone Belt



April 20, 2026

Forward-Looking Statements

Certain of the statements and information in this presentation constitute “forward-looking statements” within the meaning of the United States Private Securities Litigation Reform Act of 1995 and “forward-looking information” within the meaning of applicable Canadian provincial securities laws. Forward-looking statements and information can be identified by statements that certain actions, events or results “could”, “may”, “should”, “will” or “would” be taken, occur or achieved. All statements, other than statements of historical fact, are forward-looking statements or information. Forward-looking statements or information in this presentation relate to, among other things: the proposed acquisition by Agnico Eagle of all of the Rupert Resources Ltd. (“Rupert”) shares, all of the Aurion Resources Ltd. (“Aurion”) shares and B2Gold Corp’s (“B2Gold”) 70% interest in Fingold Ventures Ltd.,(the “Fingold JV”), and the terms thereof; Agnico Eagle’s plans for the acquired properties; the potential for, and anticipated amount of, synergies; the potential for Agnico Eagle’s Finnish operations to become an approximate 500,000 ounce annual production hub; the approval of the Rupert Transaction by Rupert shareholders; the approval of the Aurion Transaction by Aurion shareholders; regulatory approvals and closing conditions to the Rupert Transaction, the Aurion Transaction and the B2Gold Transaction; the expected date of completion of each of the Rupert Transaction, the Aurion Transaction and the B2Gold Transaction; the expectation that the Rupert Shares will be delisted from the TSX and that Rupert will cease to be a reporting issuer under applicable Canadian securities laws; the expectation that the Aurion Shares will be delisted from the TSXV and that Aurion will cease to be a reporting issuer under applicable Canadian securities laws and other statements that are not historical fact.

The forward-looking statements and information contained in this presentation reflect Agnico Eagle’s current views with respect to future events and are necessarily based upon a number of assumptions that, while considered reasonable by Agnico Eagle, are inherently subject to significant operational, business, economic and regulatory uncertainties and contingencies.

Agnico Eagle cautions the reader that forward-looking statements and information involve known and unknown risks, uncertainties and other factors that may cause actual results and developments to differ materially from those expressed or implied by such forward-looking statements or information contained in this presentation and Agnico Eagle has made assumptions and estimates based on or related to many of these factors. Such risks, uncertainties and other factors include, among others: the possibility that the Rupert Transaction, the Aurion Transaction and/or the B2Gold Transaction will not be completed in accordance with their respective terms as currently contemplated or in the expected timeframe or at all; the conditions to the Rupert Transaction, the Aurion Transaction and/or the B2Gold Transaction not being satisfied in the expected timeframe or at all; pending or potential litigation associated with the Rupert Transaction, the Aurion Transaction and/or the B2Gold Transaction; the failure to realize the anticipated benefits, including synergies, of the Rupert Transaction, the Aurion Transaction and/or the B2Gold Transaction in the expected timeframe or at all; and general economic, business and political conditions. Additional risks, uncertainties and other factors are identified in Agnico Eagle’s annual information form and management’s discussion and analysis for the year ended December 31, 2025, which have been filed with the United States Securities and Exchange Commission as part of Agnico Eagle’s Form 40-F and with the Canadian provincial securities regulatory authorities, as applicable.

Although Agnico Eagle has attempted to identify important factors that could cause actual results to differ materially from those set out or implied by the forward-looking statements and information, this list is not exhaustive and there may be other factors that cause results not to be as anticipated, estimated, described or intended. Investors should use caution when considering, and should not place undue reliance on any, forward-looking statements and information. Forward-looking statements and information are designed to help readers understand Agnico Eagle’s current views in respect of the Rupert Transaction, the Aurion Transaction and the B2Gold Transaction and related matters and may not be appropriate for other purposes. Agnico Eagle does not intend, nor does it assume any obligation to update or revise forward-looking statements or information, whether as a result of new information, changes in assumptions, future events or otherwise, except to the extent required by law.

This presentation does not constitute (and may not be construed to be) a solicitation or offer by Agnico Eagle or any of its directors, officers, employees, representatives or agents to buy or sell any securities of any person in any jurisdiction, or a solicitation of a proxy of any securityholder of any person in any jurisdiction, in each case, within the meaning of applicable laws.

- ✦ **Further Information** – See Agnico Eagle’s news release dated April 20, 2026 for further details.
- ✦ **Note Regarding Currency** – All amounts expressed in Canadian dollars unless otherwise noted.
- ✦ **Front Cover** – Agnico Eagle’s Kittila operations located in the Lapland region of northern Finland.

Creating a Multi-Decade, Multi-Asset Platform With Significant Upside

Regional Consolidation Enhancing the Finland Platform

- Consistent with long-standing strategy of consolidation in premier mining jurisdictions
- Establishes Finland as a multi-asset, multi-decade regional platform for Agnico Eagle, with a pathway to become an approximately 500,000-ounce annual gold production hub within the next decade
- Provides opportunity to leverage Agnico Eagle's 20+ year track record of proven management, exploration, permitting, mine building and operating expertise

Unlocks Significant Value at Ikkari

- Consolidation optimizes project development, including potential to add gold ounces to the mine plan and extend mine life with an extension of the Ikkari open pit onto the Fingold JV area
- Best positioned to generate unique operating, development and construction synergies estimated at up to C\$500M and realize the full strategic and operational value of the combined asset base
- Enhances development flexibility, supports more efficient mine planning and infrastructure utilization, and improves the overall value of the district

Consolidates a Highly Prospective Land Package

- Significant mineral resource expansion and discovery potential across several targets across all stages of exploration within the Central Lapland Greenstone Belt
- Materially expands Agnico Eagle's land package in Finland to 2,492 km²
- Extensive exploration program planned to unlock the full district-scale potential of the consolidated land position

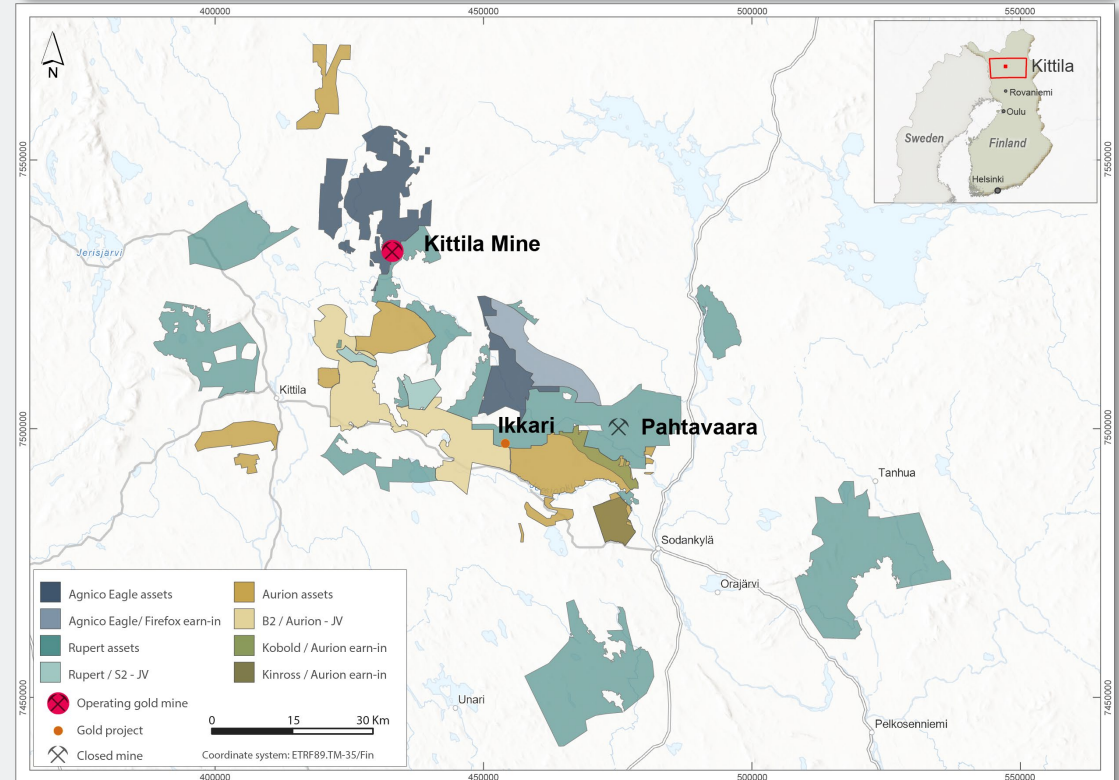
Consolidating Highly Prospective Gold District in the Nordic Region

Kittila Overview

- ▶ **Existing management and technical teams in place**
 - Capacity to develop, build and operate new assets
- ▶ **Competitive advantage from 20+ years operating in the region**
 - Strong teams, technical expertise and logistics synergies
- ▶ **Established procurement, relationships and social contribution**
 - Workforce: 900 employees and contractors as at Dec 31, 2025
 - Employee wages and benefits: ~ €65M in 2025
 - Regional procurement spend: ~ €250M in 2025



Finland Consolidated Platform Overview



Kittila

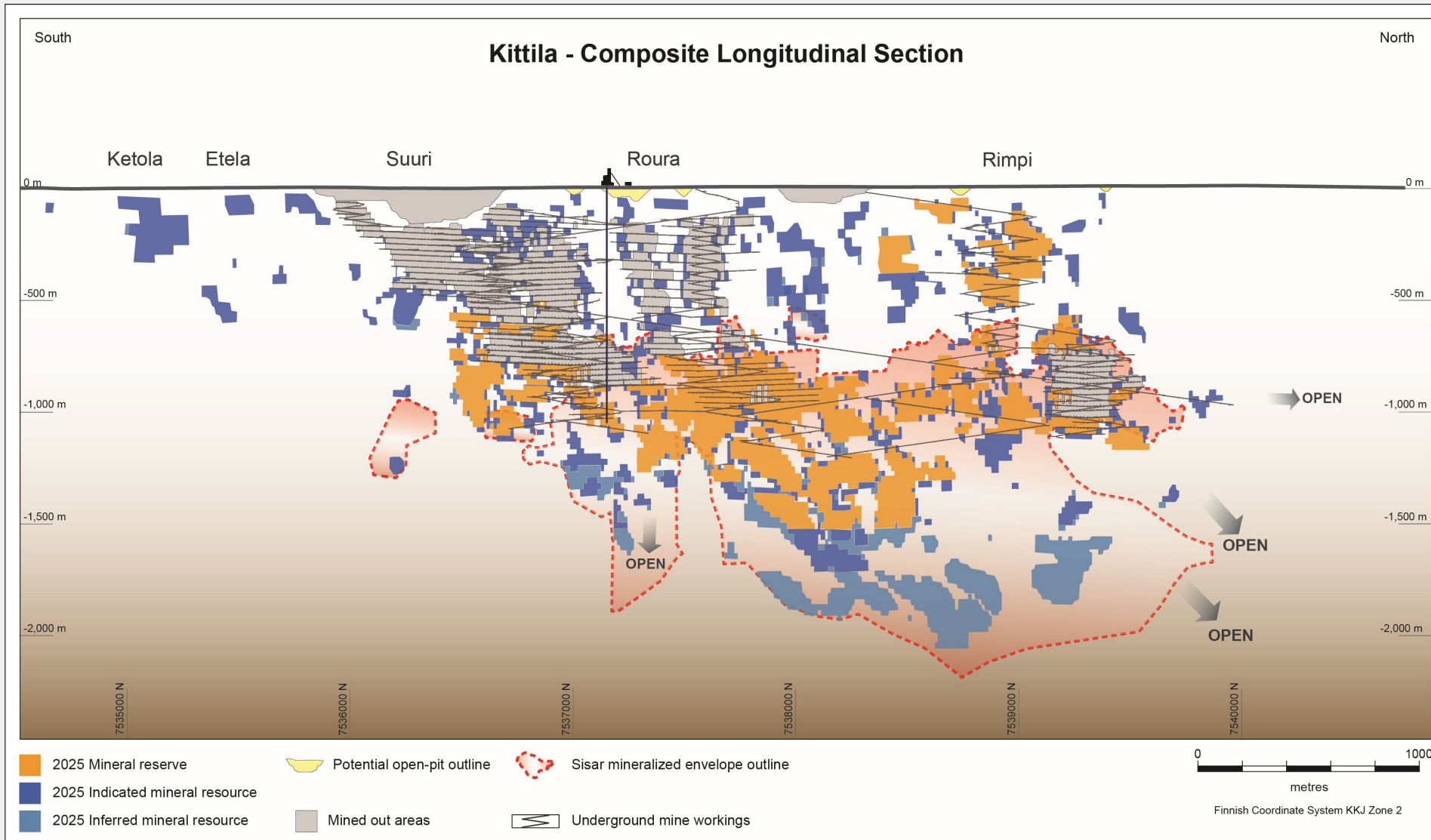
Consolidated Platform

Land Position	~355 km ²	~2,492 km ²
Mineral Reserves	3.3 Moz Au*	6.8 Moz Au
Annual Production	~225 koz Au	~500 koz Au**

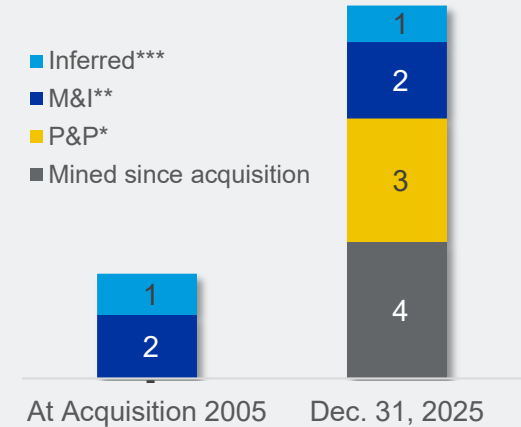
* See AEM February 12, 2026 news release and appendix for detailed breakdown of mineral reserves and mineral resources

** Potential annual gold production within the next decade

Kittila – Evolution of the Largest Primary Gold Producer in Europe



Evolution of Gold Mineral Reserves and Mineral Resources Since Acquisition (Moz)



* Proven and probable gold mineral reserves
 ** Measured and indicated gold mineral resources
 *** Inferred gold mineral resources

- Acquired in 2005, with commercial production in 2009 and expansion in 2020
- UG operation ~5.5 ktpd
- Significant growth in mineral resource base over 20 years
- Deposits remain open at depth and along strike

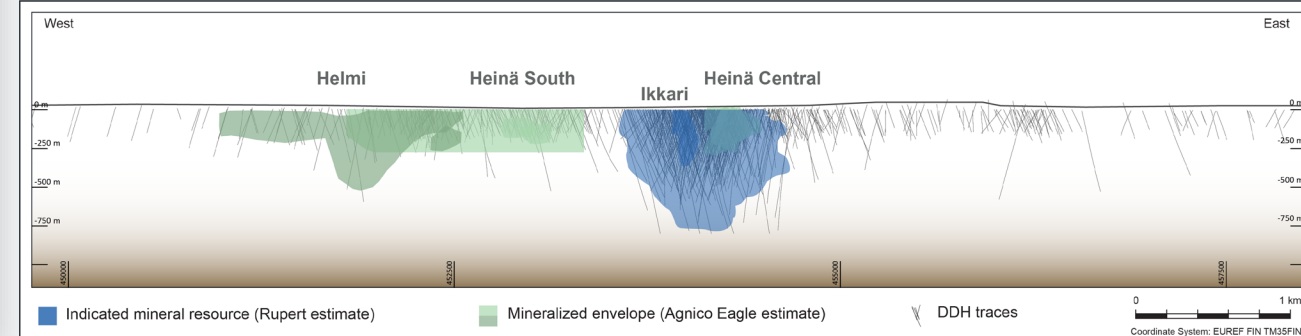
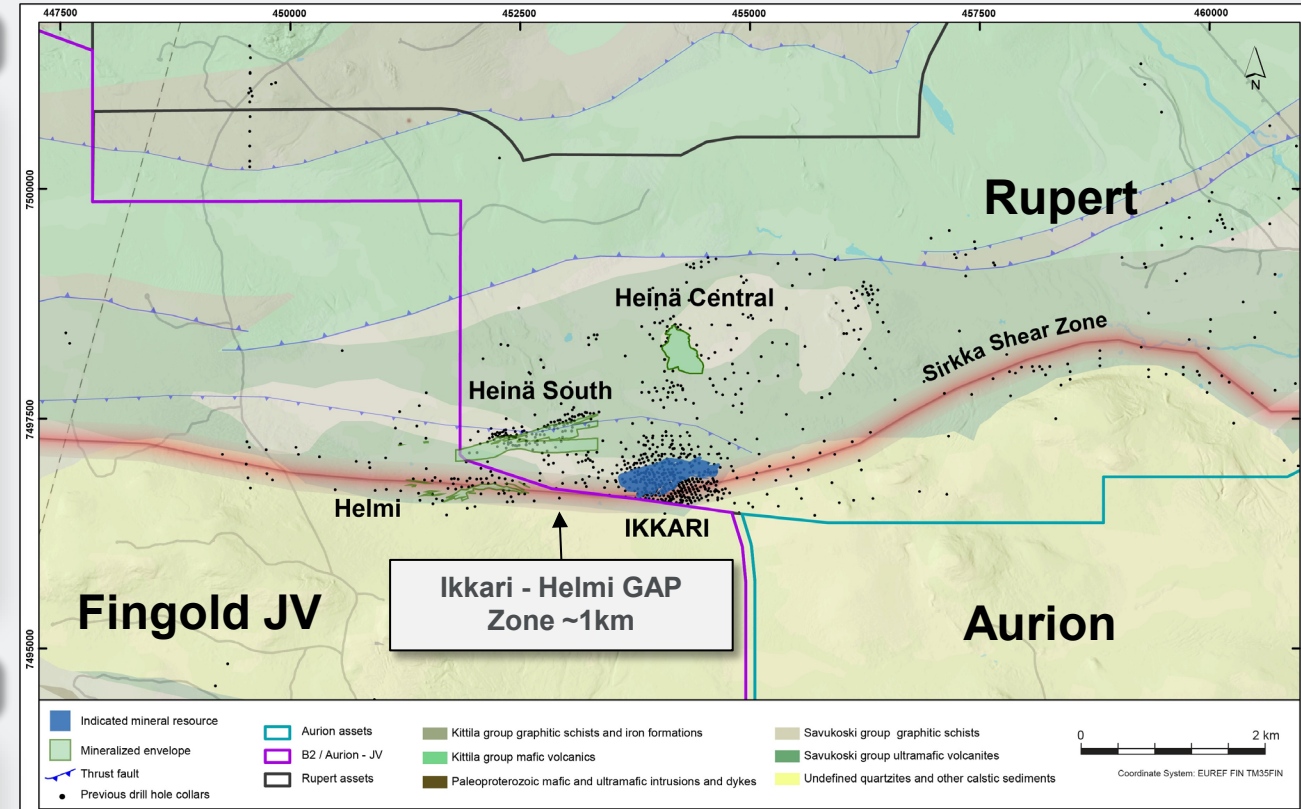
Unlocking Significant Value at Ikkari

Ikkari Gold Project

- High-quality, advanced gold project located 50km from Kittila, within the prospective Central Lapland Greenstone Belt
- Large resource base with significant exploration potential – probable mineral reserves of 3.5 Moz Au; indicated mineral resources of 4.1 Moz Au (inclusive of mineral reserves)*
- Pre-feasibility study completed by Rupert in February 2025 envisioning an open pit and underground operation utilizing conventional processing, with average annual gold production of 227koz over the first 10 years of mine life
- Agnico Eagle to focus on resource expansion and reassess optimal development approach

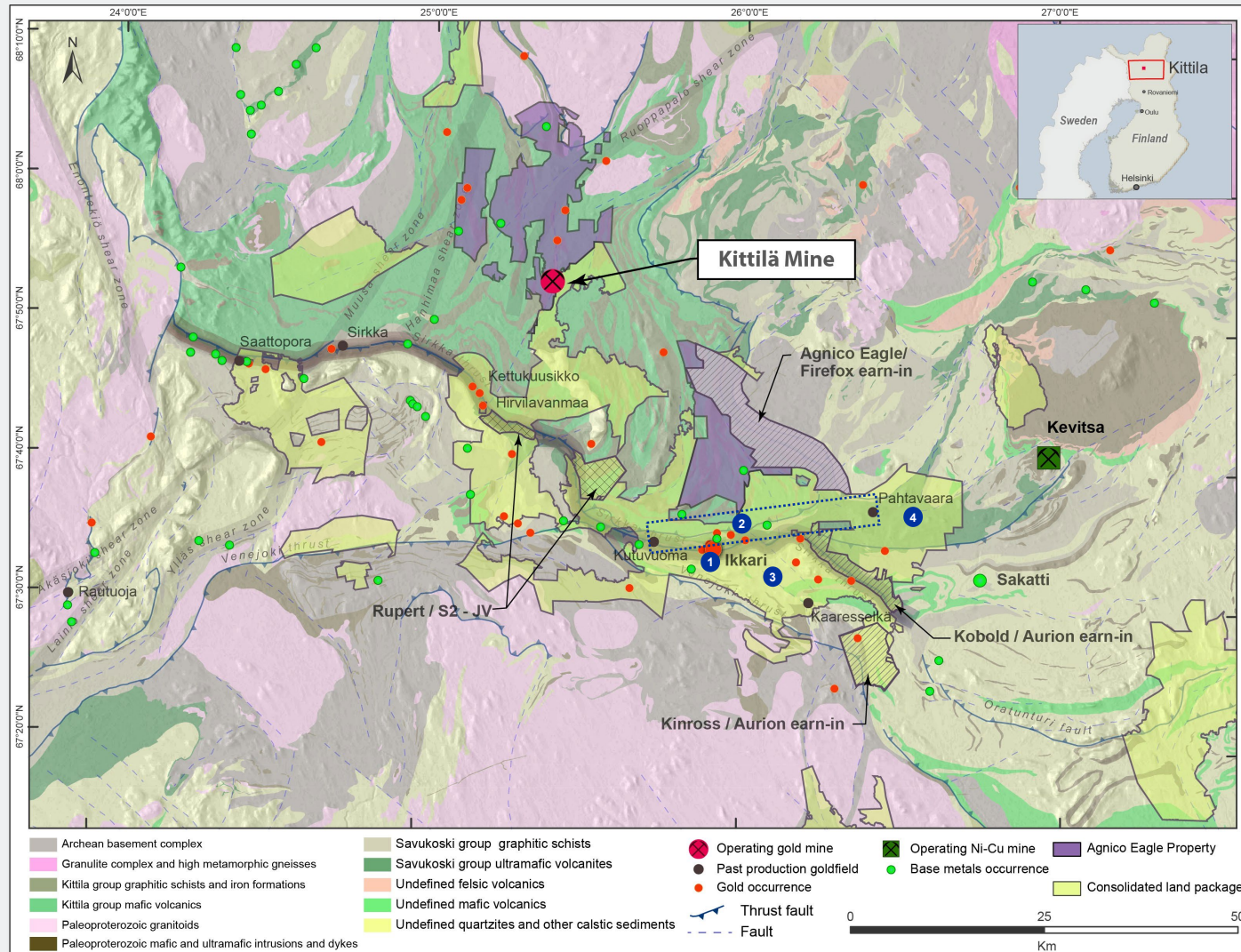
Optimal Development from Property Consolidation

- Leveraging Agnico Eagle’s proven management, exploration, permitting, mine building and operating expertise
- Elimination of property boundary creates significant value through:
 - Extension of the Ikkari open pit onto the Fingold JV area, capturing additional gold ounces in the mine plan and extending mine life
 - Enabling optimal placement of infrastructure for future development
- Potential mineral resource growth within the Ikkari-Helmi gap and at depth
- Mill at Ikkari unlocks potential for development of satellite deposits



* See appendix for detailed breakdown of mineral reserves and mineral resources

Major Land Consolidation in the Central Lapland Greenstone Belt



Consolidation of an Entire District

- Consolidated land package has significant potential for mineral resource expansion and new discoveries
- Main areas of interest for an initial 3-year exploration program:
 - 1 The Ikkari–Helmi gap area – from the property boundary between Rupert and the Fingold JV
 - 2 The broader Ikkari trend
 - Helmi deposit toward the Kutuvuoma gold deposit and beyond
 - The Rajala geological domain boundary, hosting Heina South, Heina Central, Saitta and Mike occurrences through to the past-producing Pahtavaara gold mine
 - 3 Aurion’s Risti property and Fingold JV
 - 4 The Area 51 target on Rupert’s property, with targets analogous to Cu-Ni-PGE deposits nearby

Next Steps to Build Additional Value

Ikkari Project

- Completion of an updated internal evaluation for the optimized mine design without property boundary constraints targeted by end of 2027
- Baseline studies and permitting activities expected to continue
- Development of open pit and construction is expected to take ~3 years from a development decision and could begin once permits are received
- Infill drilling at the Ikkari deposit and exploration drilling across the property boundary to the south, on the Heina South, Heina Central and other targets related to the Rajala gold-bearing structure

Regional Exploration Program

- Three-year regional exploration program planned ranging between C\$60 and C\$100M, including 100,000 to 175,000m of drilling
- Exploration program will be re-evaluated periodically, success-driven and open to expansion
- Critical mineral targets to be evaluated



Transaction Overview – Rupert Resources Ltd.

Transaction Structure	<ul style="list-style-type: none"> ➤ Agnico Eagle to acquire all of the issued and outstanding shares of Rupert (excluding shares currently held by Agnico Eagle) by way of a plan of arrangement
Purchase Price	<ul style="list-style-type: none"> ➤ Rupert shareholders to receive 0.0401 Agnico Eagle common shares for each Rupert common share held, representing upfront consideration of C\$12.00 per Rupert share ➤ In addition, Rupert shareholders to receive up to C\$3.00 per Rupert share of contingent consideration based on future mineral reserve and production milestones, payable in cash if achieved
Board and Shareholder Support	<ul style="list-style-type: none"> ➤ Unanimous approval of Rupert’s Board of Directors ➤ Voting support agreements representing 28.75% including directors, officers and other key shareholders
Key Arrangement Conditions	<ul style="list-style-type: none"> ➤ Approval by 66 2/3% of Rupert shareholders ➤ Approval of minority shareholders in accordance with MI 61-101 ➤ Not subject to any financing or due diligence conditions
Other Terms and Conditions	<ul style="list-style-type: none"> ➤ 5 business day right to match ➤ Standard representations and warranties, including no material adverse change ➤ Applicable regulatory and government approvals
Timing	<ul style="list-style-type: none"> ➤ Rupert shareholder vote: Expected June 2026 ➤ Transaction close: Expected early Q3 2026

Transactions Overview – Aurion Resources Ltd. and B2Gold Corp.



Aurion Resources Ltd.

Transaction Structure	<ul style="list-style-type: none"> ➤ Agnico Eagle to acquire all of the issued and outstanding shares of Aurion (excluding shares currently held by Agnico Eagle) by way of a plan of arrangement
Purchase Price	<ul style="list-style-type: none"> ➤ Aurion shareholders to receive C\$2.60 in cash for each Aurion common share held
Board and Shareholder Support and Lock-Ups	<ul style="list-style-type: none"> ➤ Unanimous approval of Aurion’s Board of Directors ➤ Voting support agreements representing 15.9% including directors, officers, and Adrian Day Management
Key Arrangement Conditions	<ul style="list-style-type: none"> ➤ Approval by 66 2/3% of Aurion shareholders ➤ Approval of minority shareholders in accordance with MI 61-101 ➤ Not subject to any financing or due diligence conditions
Other Terms and Conditions	<ul style="list-style-type: none"> ➤ 5 business day right to match ➤ Standard representations and warranties, including no material adverse change ➤ Applicable regulatory and government approvals
Timing	<ul style="list-style-type: none"> ➤ Aurion shareholder vote: Expected June 2026 ➤ Transaction close: Expected early Q3 2026

B2Gold Corp.

Transaction Structure & Purchase Price	<ul style="list-style-type: none"> ➤ Agnico Eagle to acquire B2Gold’s 70% interest in the Fingold JV for US\$325 million in cash
---	---



Mineral Reserves and Mineral Resources

Ikkari Project – Gold Mineral Reserves and Mineral Resources



The Ikkari property has been subject to a significant amount of diamond drilling by Rupert Resources. Rupert Resources published a NI 43-101 technical report on February 18, 2025 (dated February 14, 2025) titled “Ikkari Pre-feasibility Study NI 43-101 Technical Report”, which set out estimated mineral reserves and mineral resources at the Ikkari property.

Estimates prepared by and data reported by Rupert Resources. **Mineral resources are reported inclusive of mineral reserves.**

	Mineral Reserve Estimate (effective date Nov 25, 2024)			Mineral Resource Estimate (effective date Oct 24, 2023)					
	Probable			Indicated			Inferred		
Mining Method	Tonnes (000s)	Grade (g/t Au)	Ounces (000s Au)	Tonnes (000s)	Grade (g/t Au)	Ounces (000s Au)	Tonnes (000s)	Grade (g/t Au)	Ounces (000s Au)
Open pit	35,700	2.16	2,486	37,308	2.21	2,649	1,271	0.81	33
Underground	16,300	1.93	1,007	21,122	2.12	1,437	2,305	1.39	103
Total	52,000	2.10	3,492	58,430	2.18	4,087	3,576	1.18	136

Mineral Resource Estimate

The Ikkari Mineral Resource estimate reflected in the Ikkari Technical Report has been prepared in accordance with NI 43-101. The methodology used to determine the Mineral Resource estimate is consistent with the CIM Estimation of Mineral Resource and Mineral Reserves Best Practices Guidelines (November 2019) (the “CIM Best Practice Guidelines”) and was classified following CIM Definition Standards. Mineral Resources are reported inclusive of Mineral Reserves. Numbers are affected by rounding. Ounces stated are troy ounces and g/t = grams per tonne. The effective date of the 2023 Mineral Resource estimate for Ikkari is 24th October 2023. The Mineral Resource estimate at Ikkari is interpolated using Ordinary Kriging (OK) and is reported both within a Whittle optimized open pit shell and as a potential underground operation outside that. Underground Mineral Resources are constrained within the estimation domains to meet the RPEEE criteria for UG mining. The Mineral Resource estimate at Ikkari is reported using a cutoff grade of 0.4g/t Au for mineralisation potentially mineable by open pit methods and 0.9g/t Au for mineralisation potentially extractable by underground methods. The open pit and underground cut off-grades are calculated using a gold price at \$1700 per ounce; 95% Au metallurgical recovery; open pit mining costs at \$2.9/t; underground mining cost at \$29/t; process costs at \$11.3/t; G&A, Rehab and Closure \$4.8/t and a royalty of 0.75%. The calculated cutoff grade is rounded up to 0.4g/t for reporting. The calculated underground cutoff grade is rounded up to 0.9g/t. The associated technical report was filed on SEDAR+ on 12 December 2023 and is restated in filing on SEDAR+ on 18 February 2025

Mineral Reserve Estimate

The Mineral Reserve estimate reflected in the Ikkari Technical Report was estimated by converting the open pit and underground resource through the application of modifying factors. Indicated Resources have been converted to Mineral Reserves. Inferred Mineral Resources have been considered as waste with grades set to zero. The estimation of Mineral Reserves followed the CIM Best Practices Guidelines and is in accordance with CIM Definition Standards and NI 43-101. The Ikkari open pit and underground Mineral Reserve estimate has an effective date 25 November 2024. Tonnages are rounded to the nearest 100,000 and ounces are rounded to the nearest 1,000. Mineral Reserves are based on a gold price of US\$1,700/oz. and metallurgical recovery is based on a fixed recovery of 95.0%. Open pit Reserves are stated using a 0.34 g/t cut-off. Open pit Mineral Reserves are converted from Mineral Resources through the process of pit optimisation, mine design, schedule and are supported by a positive cash flow analysis. Open pit Reserves include an allowance for 4% dilution and 4% mining losses applied in the production schedule. Underground Mineral Reserves are stated using a 1.04 g/t cut-off. Underground Reserves are generated through the generation of optimised stopes, design of long hole open stoping, schedule and are supported by a positive cash flow analysis. Underground Mineral Reserves account for planned dilution of 15%, unplanned dilution of 6%, secondary dilution of 3% and with mining losses of 4%. Mineral Reserves are defined at the point where ore is delivered to the plant and all figures are rounded to reflect the relative accuracy of the estimates. Totals may not sum due to rounding.

Kittila – Gold Mineral Reserves and Mineral Resources

Mineral Reserves as at December 31, 2025										
Mining Method	Proven			Probable			Proven & Probable			
	000 Tonnes	g/t	000 Oz Au	000 Tonnes	g/t	000 Oz Au	000 Tonnes	g/t	000 Oz Au	Metallurgical Recovery (%)
Underground	931	4.66	140	23,818	4.15	3,179	24,749	4.17	3,319	86.0

Mineral Resources as at December 31, 2025												
Mining Method	Measured			Indicated			Measured & Indicated			Inferred		
	000 Tonnes	g/t	000 Oz Au	000 Tonnes	g/t	000 Oz Au	000 Tonnes	g/t	000 Oz Au	000 Tonnes	g/t	000 Oz Au
Open pit	—	—	—	—	—	—	—	—	—	373	3.89	47
Underground	4,669	2.87	431	17,874	2.81	1,617	22,544	2.83	2,048	6,209	4.66	930
Total	4,669	2.87	431	17,874	2.81	1,617	22,544	2.83	2,048	6,582	4.62	977

Notes to Investors Regarding the Use of Mineral Resources

The mineral reserve and mineral resource estimates contained in this presentation for Kittila have been prepared in accordance with the Canadian Securities Administrators' (the "CSA") National Instrument 43-101 – Standards of Disclosure for Mineral Projects ("NI 43-101").

The SEC's disclosure requirements and policies for mining properties now more closely align with current industry and global regulatory practices and standards, including NI 43-101; however Canadian issuers that report in the United States using the Multijurisdictional Disclosure System ("MJDS"), such as the Company, may still use NI 43-101 rather than the SEC disclosure requirements when using the SEC's MJDS registration statement and annual report forms. Accordingly, mineral reserve and mineral resource information contained in this presentation may not be comparable to similar information disclosed by U.S. companies.

Investors are cautioned that while the SEC recognizes "measured mineral resources", "indicated mineral resources" and "inferred mineral resources", investors should not assume that any part or all of the mineral deposits in these categories will ever be converted into a higher category of mineral resources or into mineral reserves. These terms have a great amount of uncertainty as to their economic and legal feasibility. **Accordingly, investors are cautioned not to assume that any "measured mineral resources", "indicated mineral resources" or "inferred mineral resources" that the Company reports in this presentation are or will be economically or legally mineable.**

Further, "inferred mineral resources" have a great amount of uncertainty as to their existence and as to their economic and legal feasibility. It cannot be assumed that any part or all of an inferred mineral resource will ever be upgraded to a higher category. Under Canadian regulations, estimates of inferred mineral resources may not form the basis of feasibility or pre-feasibility studies, except in limited circumstances. Investors are cautioned not to assume that all or any part of an inferred mineral resource exists, or is or will ever be economically or legally mineable.

The mineral reserve and mineral resource data set out in this presentation are estimates, and no assurance can be given that the anticipated tonnages and grades will be achieved or that the indicated level of recovery will be realized. The Company does not include equivalent gold ounces for by-product metals contained in mineral reserves in its calculation of contained ounces. Mineral reserves are not reported as a subset of mineral resources.

Scientific and Technical Information

The scientific and technical information contained in this presentation has been approved by Dominique Girard, Eng., Executive Vice-President & Chief Operating Officer – Nunavut, Quebec & Europe; relating to exploration has been approved by Guy Gosselin, Eng. and P.Geo., Executive Vice-President, Exploration; and relating to mineral reserves and mineral resources has been approved by Dyane Duquette, P.Geo., Vice-President, Mineral Resources Management, each of whom is a "Qualified Person" for the purposes of NI 43-101.

Mineral reserves reported are not included in mineral resources. Tonnage amounts and contained metal amounts set out in this table have been rounded to the nearest thousand, so may not aggregate to equal column or row totals. Mineral reserves are in-situ, taking into account all mining recoveries, before mill or heap leach recoveries. Underground mineral reserves and measured and indicated mineral resources are reported within mineable shapes and include internal and external dilution. Inferred mineral resources are reported within mineable shapes and include internal dilution. Mineable shape optimization parameters may differ for mineral reserves and mineral resources.

The Company's economic parameters set the maximum price allowed to be no more than the lesser of the three-year moving average and current spot price, which is a common industry standard. Given the current commodity price environment, Agnico Eagle continues to use more conservative gold prices.

The below metal price assumptions are all below the three-year historic averages (from January 1, 2023 to December 31, 2025) of approximately \$2,606 per ounce of gold.

Metal Price for Mineral Reserve Estimation	Metal Price for Mineral Resource Estimation	Exchange Rate
Gold (\$/oz)	Gold (\$/oz)	€ per US\$1.00
\$1,600	\$2,000	€0.91

Notes to Investors Regarding the Use of Mineral Resources

NI 43-101 requires mining companies to disclose mineral reserves and mineral resources using the subcategories of "proven mineral reserves", "probable mineral reserves", "measured mineral resources", "indicated mineral resources" and "inferred mineral resources". Mineral resources that are not mineral reserves do not have demonstrated economic viability.

A mineral reserve is the economically mineable part of a measured and/or indicated mineral resource. It includes diluting materials and allowances for losses, which may occur when the material is mined or extracted and is defined by studies at prefeasibility or feasibility level as appropriate that include application of modifying factors. Such studies demonstrate that, at the time of reporting, extraction could reasonably be justified. The mineral reserves presented in this presentation are separate from and not a portion of the mineral resources.

Modifying factors are considerations used to convert mineral resources to mineral reserves. These include, but are not restricted to, mining, processing, metallurgical, infrastructure, economic, marketing, legal, environmental, social and governmental factors.

A proven mineral reserve is the economically mineable part of a measured mineral resource. A proven mineral reserve implies a high degree of confidence in the modifying factors. A probable mineral reserve is the economically mineable part of an indicated and, in some circumstances, a measured mineral resource. The confidence in the modifying factors applied to a probable mineral reserve is lower than that applied to a proven mineral reserve.

A mineral resource is a concentration or occurrence of solid material of economic interest in or on the Earth's crust in such form, grade or quality and quantity that there are reasonable prospects for eventual economic extraction. The location, quantity, grade or quality, continuity and other geological characteristics of a mineral resource are known, estimated or interpreted from specific geological evidence and knowledge, including sampling.

A measured mineral resource is that part of a mineral resource for which quantity, grade or quality, densities, shape and physical characteristics are estimated with confidence sufficient to allow the application of modifying factors to support detailed mine planning and final evaluation of the economic viability of the deposit. Geological evidence is derived from detailed and reliable exploration, sampling and testing and is sufficient to confirm geological and grade or quality continuity between points of observation. An indicated mineral resource is that part of a mineral resource for which quantity, grade or quality, densities, shape and physical characteristics are estimated with sufficient confidence to allow the application of modifying factors in sufficient detail to support mine planning and evaluation of the economic viability of the deposit. Geological evidence is derived from adequately detailed and reliable exploration, sampling and testing and is sufficient to assume geological and grade or quality continuity between points of observation. An inferred mineral resource is that part of a mineral resource for which quantity and grade or quality are estimated on the basis of limited geological evidence and sampling. Geological evidence is sufficient to imply but not verify geological and grade or quality continuity.

Investors are cautioned not to assume that part or all of an inferred mineral resource exists, or is economically or legally mineable.

A feasibility study is a comprehensive technical and economic study of the selected development option for a mineral project that includes appropriately detailed assessments of applicable modifying factors, together with any other relevant operational factors and detailed financial analysis that are necessary to demonstrate, at the time of reporting, that extraction is reasonably justified (economically mineable). The results of the study may reasonably serve as the basis for a final decision by a proponent or financial institution to proceed with, or finance, the development of the project. The confidence level of the study will be higher than that of a pre-feasibility study.



NYSE & TSX: **AEM**



AGNICO EAGLE

Investor Relations

416-947-1212

investor.relations@agnicoeagle.com

agnicoeagle.com

